



Issue Brief

Reference Pricing Reduces Employer and Employee Spending for Magnetic Resonance Imaging (MRI) Scans

by James C. Robinson, Christopher M. Whaley, and Timothy T. Brown



The Magnetic Resonance Imaging (MRI) procedure findings in this brief derive from a series of studies on the impacts of reference pricing, conducted at the UC Berkeley Center for Health Technology (BCHT). Data for these health insurance studies were obtained from large self-insured employers and employer associations: the California Public Employees Retirement System (CalPERS), Safeway, and the RETA Trust.

All studies compare changes in consumer choice and provider prices before and after implementation of reference pricing, and compare these changes to the choices made by comparable employed groups not subject to reference pricing during the same time period. This research method is referred to as 'difference-in-differences' multivariable statistical analyses. Comparison group data were obtained from health insurance provider Anthem, Inc., and pharmacy benefit manager Envision Rx. Full information on the reference pricing studies can be obtained from the BCHT website, bcht.berkeley.edu.

Methods

In November of 2011, Safeway, a national chain of retail grocery stores and food-processing factories in the U.S., implemented reference pricing for imaging services for its self-insured health plan. Unionized employees were excluded because their insurance was governed by collective bargaining contracts negotiated before the development of reference pricing. Additionally, reference pricing was only applied in nonemergency situations, when the patient had the ability to shop among alternative providers. Patients were permitted to use high-priced providers without extra charge if their physicians indicated clinical reasons or if the patient did not have reasonable geographic access to a lower-priced alternative.

Safeway established a maximum reimbursable amount MRI procedures at approximately the 60th percentile of the distribution of prices in 2010. Employees were given access to an online price transparency tool developed by Castlight Health, which present the allowed charge and the expected patient cost-sharing for different providers.

The problem: price variation

Prices charged for similar health care services often vary dramatically within and across local communities. This variation results from a combination of low price sensitivity on the part of patients, itself due to generous insurance coverage, and high pricing power by providers, due to increasing market consolidation.

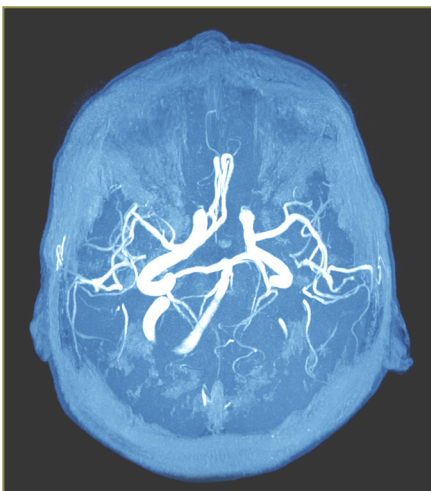
The large variation in prices paid also raises concerns about clinical appropriateness, given the financial incentives facing the hospitals and ambulatory facilities that administer imaging tests. Studies have found rates of use for MRI and other imaging procedures to be higher on the part of physicians who own imaging equipment and hence receive the facility as well as professional fee for the procedure, compared with those who only receive the professional fee. The emergence of providers' financial incentives and subsequent growth in volume has focused insurers' attention on the prices paid for these and other tests.

A partial solution: reference pricing

To counter this price variation, some large self-insured employers have developed reference pricing, an insurance benefit design that encourages employees to favor providers charging low prices for non-emergency "shoppable" services. Reference pricing can pair with price transparency and supplement or substitute for annual deductibles. The long-term goal is to change the incentives facing providers, motivating them to compete based on price and to pursue cost-reducing innovations in the design of their services.

Under reference pricing, the employer or insurer establishes a limit on what it will contribute towards a particular service, with the enrollee required to pay the remainder. That contribution is normally set near the median of the distribution of prices in the local market, allowing for full coverage at cost-effective providers and partial coverage at more expensive providers.

Employees retain the ability to select their own physicians and facilities, and receive full coverage if fees are equal to or less than the reference price limit. It is only when employees select higher priced physicians or facilities that they must pay the difference between the reference limit and the price charged. Reference pricing has been shown to induce significant shifts in consumer choices toward lower-priced providers for inpatient surgery, ambulatory surgery, and clinical laboratories in the United States.



MRI of the brain

Data

Claims data on type, volume, place of service, and price of MRI procedures were obtained for Safeway employees. For comparison, claims data was obtained for enrollees in Anthem Blue Cross who also used MRI procedures during the same period. The data extended from January 2010 through December 2013.

Patient demographics included patient age, sex, and 3-digit zip code. Patients over the age of 64 were excluded, as they were eligible for Medicare. The price data included the paid amount (allowed charge) and, separately, the amount paid by the employer and the amount paid by the patient.

Four endpoints were used in the analysis. The first measured the extent to which Safeway employees selected providers that charged less than or equal to the reference price. The second measured the total price paid, or allowed charge, to the facility. The third endpoint was the amount paid for the test by the patient under cost-sharing obligations. The fourth was the amount paid by Safeway or Anthem for patients not subject to reference pricing.

After adjusting for characteristics of the tests and patients, the association between reference pricing and the four endpoints was analyzed using difference-in-difference multivariable regression analysis, where the change over time for the Safeway treatment group, and for the Anthem comparison group, was computed with respect to each endpoint.

Table 1: 2010 Distribution of Prices Paid by Safeway and Price Paid by Medicare: 5 MRI Procedures Most Commonly Used by Safeway Employees

Imaging Procedure	Percentile					
	5th	25th	50th	75th	90th	Medicare
MRI brain wo&w dye (CPT 70553)	\$219	\$637	\$773	\$1414	\$2272	\$535
MRI neck spine wo dye (CPT 72141)	\$147	\$523	\$597	\$773	\$1294	\$349
MRI neck spine wo dye (CPT 72148)	\$448	\$573	\$598	\$863	\$1515	\$349
MRI joint upper extremity wo dye (CPT 73221)	\$143	\$573	\$597	\$723	\$1328	\$349
MRI joint lower extremity wo dye (CPT 73221)	\$145	\$548	\$597	\$700	\$1082	\$349

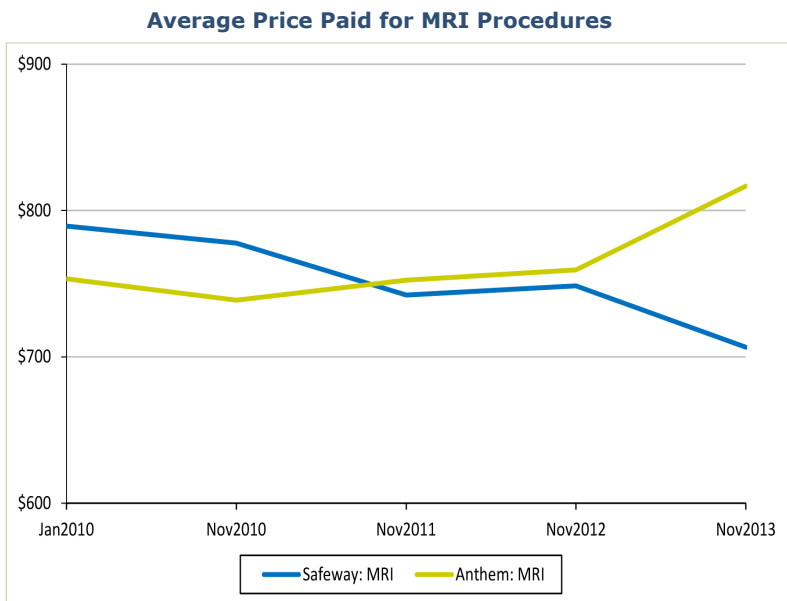
Findings

The price paid for MRI procedures varies substantially

The variation in prices paid for the 5 MRI tests most commonly used by Safeway employees in 2010 is remarkable.

Table 1 shows the distribution of prices paid. There is typically a 10-fold difference between the 5th and 95th percentiles in each test’s price distribution. For example, prices paid for a MRI of the brain ranged from \$219 to \$2272 even after trimming the minimum and maximum outliers. By way of comparison, the national average Medicare payment for this test in 2010 was \$535, substantially below the 25th percentile in the price distribution for Safeway. This variation in price motivated Safeway to implement reference pricing.

Figure 1: Average prices paid for MRI procedures, before and after implementation of reference pricing



Prices paid decreased following implementation

Before the implementation of reference pricing in November of 2011, the prices paid by Safeway were declining slightly for MRI. After implementation, prices continued declining. By way of contrast, prices paid by Anthem increased in the years after Safeway implemented reference pricing.

Implementation changed patients’ choice of provider

After controlling for the experiences of Anthem enrollees, the implementation of reference pricing for Safeway was associated with significant changes in market shares. As seen in Figure 2 in the year of implementation (2011), reference pricing was associated with a 6.9% reduction in the probability of a Safeway

employee selecting a high price facility. This was followed by a reduction of 16.6% in the first complete year after implementation (2012), and a 16.0% reduction in the second year after implementation (2013). These reductions are noteworthy in light of the general market increases in selection of high-priced providers. Before implementation of reference pricing, Safeway employees were 30.2% more likely to use a high-priced facility than were Anthem enrollees.

Implementation reduced the price paid by Safeway

Reference pricing did not exert a significant impact on prices during the year of implementation. But by the first full year after implementation, it was associated with a reduction of \$103 (12.8%) paid per test by Safeway (Figure 3). In the second full year after implementation, reference pricing was associated with an \$84 (10.5%) reduction in prices. During these same years, the average price paid by Anthem, which did not implement reference pricing, increased from \$735 to \$772. It should be emphasized that these reductions in prices paid by Safeway stem from changes in the choices made by employees, rather than from changes in the prices charged by any particular facility.

Implementation reduced customer cost-sharing

Prior to implementation of reference pricing, Safeway employees paid an average of \$126 (96.4%) out of pocket more per test than did Anthem enrollees. Even though cost-sharing for MRI tests was rising during the 2010-2013 period, reference pricing counteracted this trend. Reference pricing was associated with

Figure 2: Association between Implementation of Reference Pricing and Patient Choice of Facility, 2010-2013

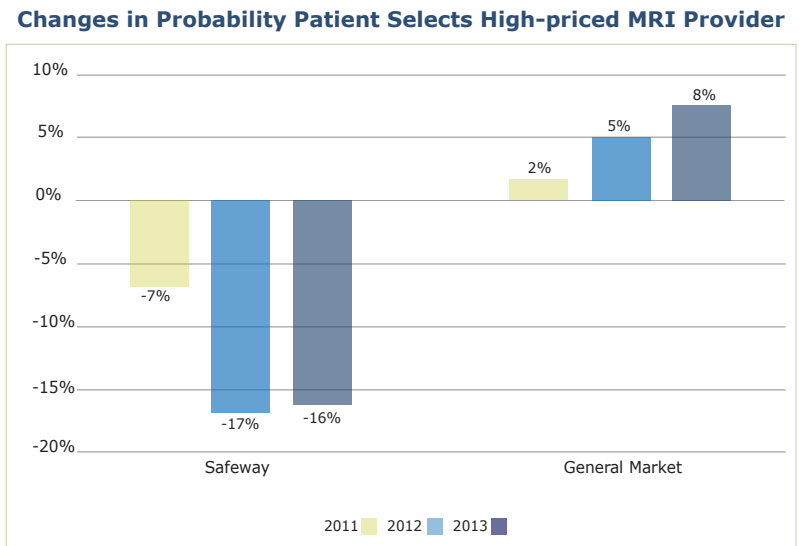
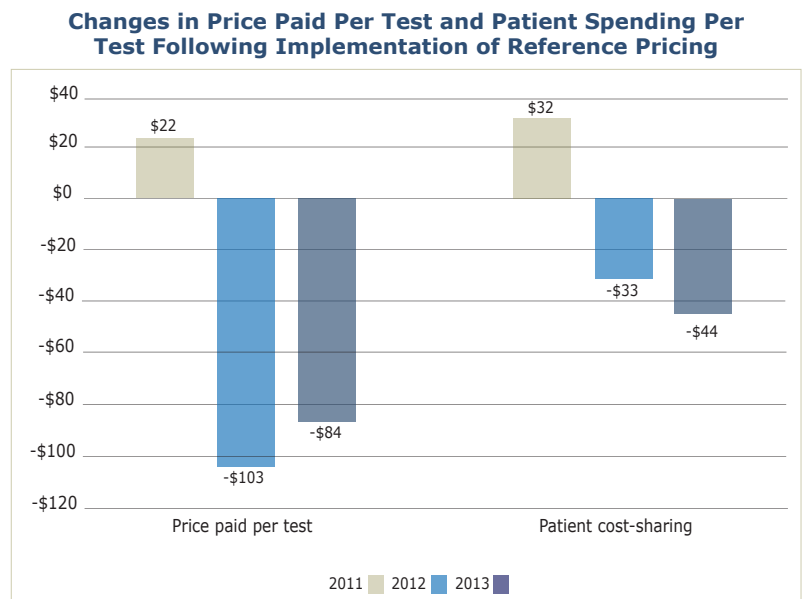


Figure 3: Association Between Implementation of Reference Pricing and Test Prices and Patient Cost-Sharing for MRIs, 2010-2013



a \$33 (16.9%) reduction in consumer cost-sharing per test in 2012 and \$44 (20.9%) in 2013. Over the same period, out-of-pocket spending for the Anthem population increased from \$148 to \$187.

Reference pricing saved money for both the employee and employer

Reductions in prices paid for 1,474 MRI procedures in 2012 and 2013 resulted in a total savings of \$137,892 for Safeway and its employees. Savings accrued by Safeway amounted to \$81,440 (59.1%) and its employees saved \$56,453 (40.9%).

Conclusion

Implementation of reference pricing led to changes in consumer choices and to savings for both Safeway and its employees. Consumers shifted to facilities charging lower prices, and the average price paid for an MRI decreased by 10.5 percent. Reference pricing reduced employee cost-sharing as well.

However, reference pricing does not address all issues facing the health care system. It targets prices, not utilization, and as a result neither reduces demand for inappropriate services nor increases adherence to appropriate alternatives. It is limited in scope to only acute episodes of care and necessitates patient access to information regarding price and quality.



Reference pricing adds to complexity of choice already facing consumers and will only succeed if health care is restructured.

Despite the limitations of reference pricing, Safeway successfully lowered spending by double-digit percentages through its implementation. Few other purchaser strategies have such potential. Because price is an easily understood metric for patients, compared to quality and clinical appropriateness, reference pricing can change the way consumers view health care, creating a culture of engagement, cost comparison and informed choices. The experience of shopping for price may stimulate patients subsequently to compare providers across all dimensions of performance, and take them a step further on the journey towards value-based health care.

Robinson, James C., Christopher M. Whaley, and Timothy T. Brown. "Reference Pricing Reduces Employer and Employee Spending for Magnetic Resonance Imaging (MRI) Scans." *Medical care* (2016).

JAMES C. ROBINSON is the Leonard D. Schaeffer Professor of Health Economics and Director of the Berkeley Center for Health Technology (BCHT) at the University of California, Berkeley. **CHRISTOPHER M. WHALEY** is Associate Policy Researcher at RAND, and Adjunct Professor of Health Economics at the UCB School of Public Health. **TIMOTHY T. BROWN** is Associate Professor of Health Economics, and BCHT Director of Research at UCB.



BERKELEY CENTER
FOR HEALTH TECHNOLOGY

The **BERKELEY CENTER FOR HEALTH TECHNOLOGY** (BCHT) conducts research into existing and improved criteria for coverage, consumer cost-sharing, and other dimensions of management for biomedical innovations. BCHT also provides academic programs for UC Berkeley graduate students and professional development for health care organizations whose senior staff would benefit from deeper understanding of the innovation, coverage, and reimbursement environment.